

iCorps' Encompass Program

Outsourced IT Support Services



How Encompass Edge Works

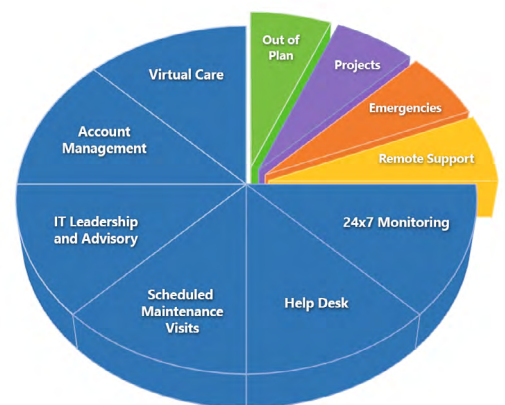
iCorps' Encompass Edge program is designed to efficiently manage a cloud-based IT infrastructure and workforce. Whether your company was born in the cloud, or is ready to migrate, Encompass Edge combines proactive IT services, planning, and expertise for optimal performance. Our certified and experienced cloud consulting team is dedicated to making sure your cloud investments are driving performance.

The Encompass Edge program has three key stages:

1. **Assessment & Planning** - perform a 360 Technology or Cloud Readiness assessment, for a comprehensive overview of your environment.
2. **Migration & Enablement** - our consultants identify priorities, modernization services, and deploy platforms that streamline workflow and productivity.
3. **Optimization** - we'll continue to optimize your cloud investment. We provide comprehensive advisory services, protection management, and improved end-user experiences.



- | | |
|--|--|
|  Fixed IT spending |  Minimize all unplanned IT spending |
|  Approved and accounted for variable spending |  Remote Support |



iCorps' Encompass Program

Outsourced IT Support Services

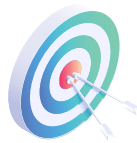


A Proactive Approach To Digital Transformation

Managing a cloud environment is difficult for businesses with limited internal resources. Encompass Edge delivers advisory services that focus on strategic cloud adoption, integration, and management. Our consultants deploy protection and service management across your cloud and IT assets, monitoring health, access, and consumption. These real-time insights allow our cloud experts to optimize your cloud investments and provide refined experiences for your end-users and customers.



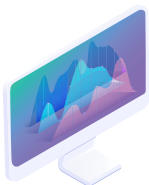
**Build Competency
Around Modern Apps**



**Enrich Employee
Collaboration**



**Improve IT Governance
& Data Security**



**Retire Costly Legacy
Systems & Applications**



**Streamline Existing
Business Processes**



**Collect Actionable Data
Insights & Analytics**